



Nashik Shikshan Prasarak Mandal's  
**Late Bindu Ramrao Deshmukh Arts & Commerce  
Mahila Mahavidyalaya**

Sane Guruji Nagar, Nashik Road, Nashik -422101  
[url:http://nspm.mahilacollege.in](http://nspm.mahilacollege.in), email.nspmamm@yahoo.co.in, Tel.:0253-2465967  
(ID.No.PU/NS/AC/54/1998)

### **Cotton bag Distribution in Sadhugram**

In the year 2015-2016 the KumbhMela was conducted in Nashik. To participate in this (Mela) Programme about 4 lakhs international and national person visited to Nashik. From 1 July to 12 July 1000 cotton bag were distributed to SADHU gram by students. From 1<sup>st</sup> July to 12<sup>th</sup> July students visited to Sadhugram in Panchavati, Nashik. They met so many SantMahant there and request them to suggest to use cotton bags. Sadhu mahant praised their plasticfree drive. 1000 cotton bag were distributed to SADHU gram by 40 students



*Leena Parth*  
PRINCIPAL



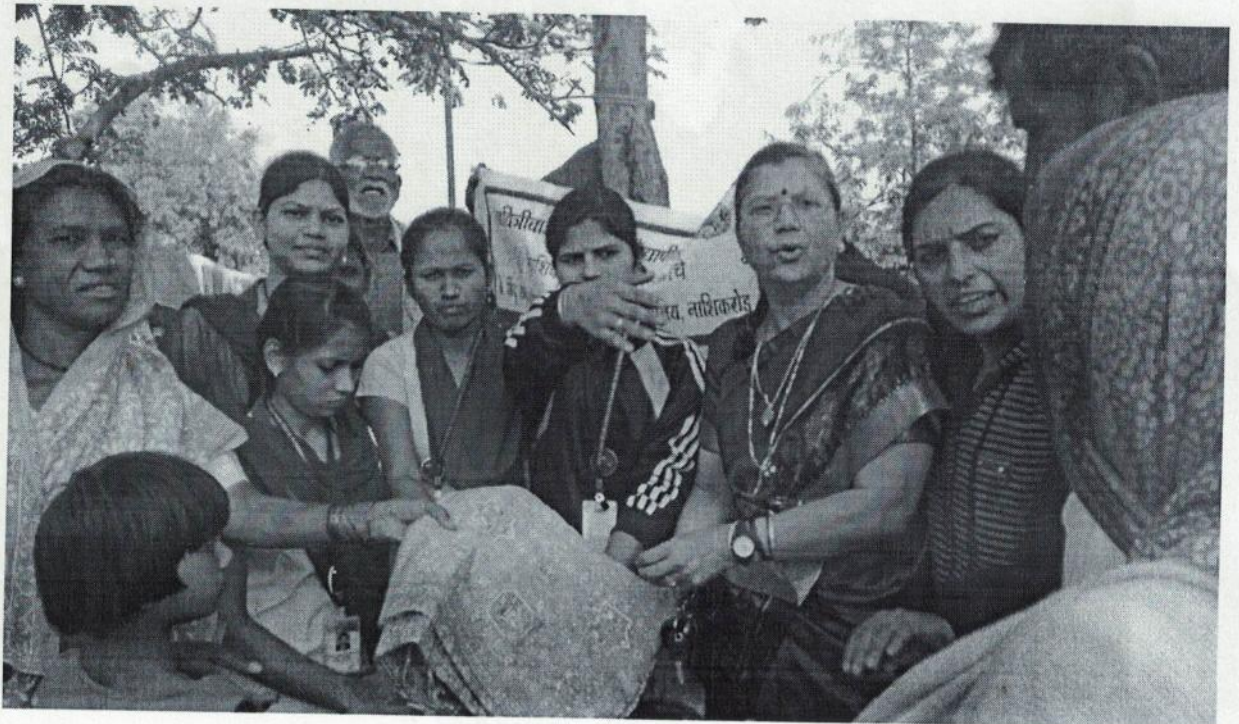


Nashik Shikshan Prasarak Mandal's  
**Late Bindu Ramrao Deshmukh Arts & Commerce  
Mahila Mahavidyalaya**

Sane Guruji Nagar, Nashik Road, Nashik -422101  
[url:http://nspm.mahilacollege.in](http://nspm.mahilacollege.in), email.nspmamm@yahoo.co.in, Tel.:0253-2465967  
(ID.No.PU/NS/AC/54/1998)

### Report of Distribution of Clothes to Poor People

There was the news in all papers about the death of some poor people because of terrible cold. Those people leave in zuggi, under bridge in open places, on station platform and on river banks and become victims of cold. The news feel deep sorrow in the heart of the students of the college. Students council appealed students of the college and all the students in the college gathered some cloths i.e. sweaters, bed sheets and bed covers, sarees etc. and on 29<sup>th</sup> Jan. 2018, 6 bags cloths were distributed to poor people in Panchavati Area and prove their social awareness.



*Leena Sandhan*  
PRINCIPAL